

# 10Gbps SFP+ PCI Express Server Adapter



Enhanced from the current highly-praised version, PLANET has released a brand-new version of the 10Gbps SFP+ PCI Express Server Adapter – the ENW-9801 version 2. The new version of the ENW-9801 is upgraded with PCI Express rev. 2.0 specification x4 interface and other advanced features as follows:

- Smaller and Compact in design
- Flexible 10G SFP+ Module Installation
- Low Profile Bracket

### The Server Level Adapter to Expand Networking Environments

The ENW-9801 is a PCI Express 10Gbps Ethernet Adapter designed to meet high-performance system application requirements. With the innovative PCI Express Bus Architecture, the ENW-9801 provides superior performance than the network cards based on 32/64bit PCI architecture. It provides the best solution to one of the major issues of Server Farm Networks -- communication speed. Ten times faster than the existing 1000Base-SX/LX fiber solutions, PLANET ENW-9801 is designed to connect your servers and workstations, guaranteeing extremely high throughput and excellent signal quality.

Moreover, the ENW-9801 supports IEEE 802.1Q VLAN which allows it to operate in a flexible and secure network environment. With 16K Jumbo Frame ability and IEEE 802.3 Flow Control support, it further optimizes throughput and wire-speed packet transfer performance without risk of packet loss. The high data throughput of the device makes it ideal for most 10 Gigabit Ethernet environments.

### 10 Gigabit Performance Boosts Network Traffic

The ENW-9801 is an optimal solution to Ethernet applications by providing low-power budgets and small form factor. It offers simple integration into any PCI Express x4 server slot via one SFP+ slot. The onboard controller featured on the ENW-9801 integrates embedded technology and a 10GbE MAC into a single chip that offers up to 10Gbps of network throughput. PLANET Network solution greatly reduces the TCP/IP packet processing tasks of the server's CPU by performing enhanced data-handling algorithms, thereby providing nearly 10Gb line speed performance with the simplicity of a conventional Network Interface Card (NIC).

## Applications

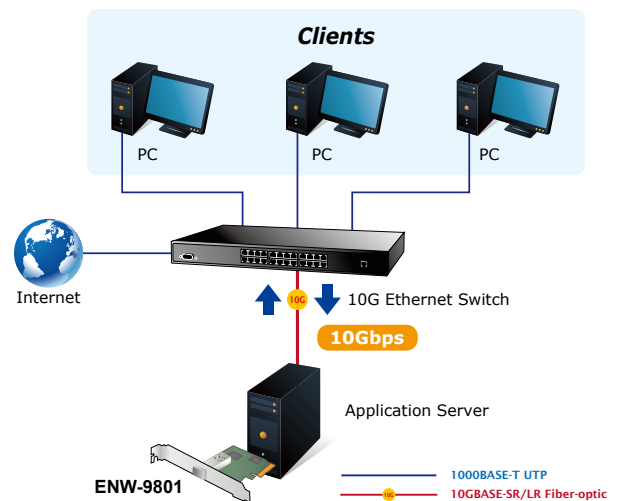
- Server NICs

PLANET ENW-9801 is equipped with one 10 Gigabit SFP interface, giving ten times more performance than the existing Gigabit transmission. Thus, the ENW-9801 can easily act as a server NIC of your networks by wiring to the backbone switches. With one PCI Express rev. 2.0 specification x4 Interface, the ENW-9801 is an ideal solution to the mainboard with PCI Express interface now and in the future.

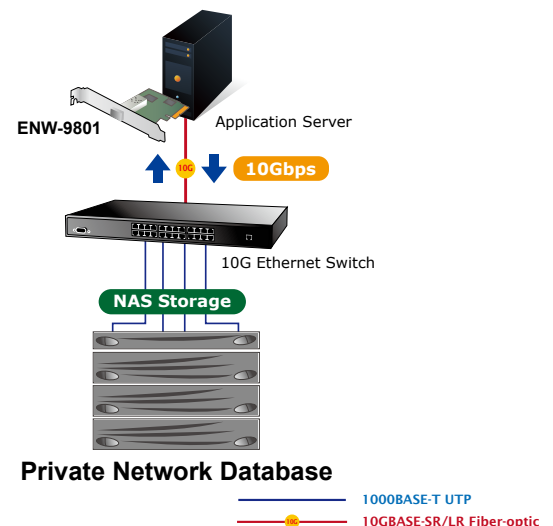
### Product Features

- PCI Express rev. 2.0 specification x4 Interface
- IP, TCP, UDP checksum offloading
- IEEE 802.1Q VLAN ID Tagged / IEEE 802.1q Qos
- 16K Jumbo Frame Size
- IEEE 802.3x Full-Duplex Flow Control
- Complies with Microsoft and Linux Platform

### Public/Intranet Network Access



### Server Farm Application



### Private Network Database

## Specifications

Model	ENW-9801 10Gbps SFP+ PCI Express Server Adapter	
<b>Hardware Specifications</b>		
Hardware Version	2	
Attachment Interface	PCI Express rev. 2.0 specification x4 Interface	
Media Interface	SFP+ Connector	
Optical Module Options	LRM, LR, SR	
Memory	1Mbit internal memory	
Jumbo Frame	9K / 16K Bytes	
LED Indicators	LNK / ACT per port	
Dimensions (W x D x H)	62 x 83 x 22 mm	
Weight	47g	
Typical Power Consumption	4 watts	
<b>Advanced Functions</b>		
Layer 2 Features	IEEE 802.3x Flow Control support IEEE 802.1Q VLAN support	
Operating System Support	Windows Server 2008R2 64bits Windows Server 2012 64bits Windows 7 32 / 64bits Windows 8 32 / 64bits Linux (2.6x to 3.8.0) VMware® ESX 4.x	
<b>Standards Conformance</b>		
Regulation Compliance	FCC Part 15 Class B, CE	
Standards Compliance	IEEE 802.3ae IEEE 802.3x IEEE 802.1Q	10Gbps Ethernet Flow Control and Back Pressure VLAN Tagging
<b>Environment</b>		
Operating	Temperature: 0 ~ 50 degrees C Relative Humidity: 5 ~ 95% (non-condensing)	
Storage	Temperature: -10 ~ 85 degrees C Relative Humidity: 5 ~ 95% (non-condensing)	
<b>Package</b>		
Package Contents	<ul style="list-style-type: none"> <li>▪ ENW-9801 Server Adapter</li> <li>▪ Quick Installation Guide</li> <li>▪ CD-ROM (Driver &amp; User's Manual)</li> <li>▪ Low Profile Bracket</li> </ul>	

## Ordering Information

ENW-9801	10Gbps SFP+ PCI Express Server Adapter
----------	--

## Related Product

ENW-9803	10GBase-T PCI Express Server Adapter
XGSW-28040	24-Port 10/100/1000Mbps with 4-Port Shared SFP + 4-Port 10G SFP+ Managed Switch
WGSW-52040	48-Port 10/100/1000Mbps + 4-Port 1000X SFP + 4-Port 10G SFP+ Managed Switch

## Available Modules

MTB-SR	SFP+ Port 10GBase-SR mini-GBIC Module (Multi-mode / 850nm / max. 550m)
MTB-LR	SFP+ Port 10GBase-LR mini-GBIC module (Single mode / 1310nm / max. 10km)

### PLANET Technology Corporation

11F., No.96, Minquan Rd., Xindian Dist., New Taipei City  
231, Taiwan (R.O.C.)  
Tel: 886-2-2219-9518 Fax: 886-2-2219-9528  
Email: sales@planet.com.tw www.planet.com.tw



PLANET reserves the right to change specifications without prior notice. All brand names and trademarks are property of their respective owners. Copyright © 2014 PLANET Technology Corp. All rights reserved.

ENW-9801v2